



ROOMS AND SUITE DESCRIPTIONS



“My two hotels in the West Country are each very different and I love them both. One for its perfect position and views of the Cornish sea, the other for its extraordinary architecture deep in the secluded Devon countryside.

Tresanton is a cluster of houses on the edge of St Mawes, one of the prettiest fishing villages in Cornwall. In 1997 I bought Tresanton and spent two years completely redesigning it.

Tresanton has 30 rooms and suites, a restaurant with large terraces, a room for private parties, a dogs’ bar and from May to September there is a terraced beach club serving light bites and drinks overlooking St Mawes Bay as well as our private sailing yacht ‘Pinuccia’ available for our guests to charter. We love children and have a playroom and children’s garden.

There is no muzak whatsoever at Tresanton only the sound of the waves and the occasional Sea Shanty.”




OLGA POLIZZI



ROOMS AND SUITE DESCRIPTIONS

LITTLE TRESANTON (Location 3)

Situated at the front of the property with only a few steps to negotiate. The building is two floors and is also home to our hotel bar, The Dogs' Bar with it's cosy open fire, traditional games to play and views out to sea. A perfect place to relax with your family and pet.

	<p>Room 1: Favourite Room (38sq m) SPADE</p> <p>This room in Little Tresanton has a private terrace with sea view. The ensuite bathroom has a bathtub with separate shower.</p> <ul style="list-style-type: none"> ✓ Bed size is Emperor (200cm) ✓ Can be made as a Twin ✓ Can take an extra bed or cot. ✓ Dogs are welcome. <p>15 steps to this room from the road.</p>
	<p>Room 2: Spacious Room (24sq m) HEART</p> <p>This sea-view room in Little Tresanton has a distinct spacious sitting area. The ensuite bathroom has a bath tub with overhead shower.</p> <ul style="list-style-type: none"> ✓ Bed size is Super King (180cm) ✓ Dogs are welcome. ✓ Can take an extra bed or cot. <p>15 steps to this room from the road.</p>
	<p>Room 3: Spacious Room (24sq m) HEART</p> <p>This sea-view room in Little Tresanton is a split-level room, a separate sitting area on the lower level. The ensuite bathroom has a bath tub with overhead shower.</p> <ul style="list-style-type: none"> ✓ Bed size is European King (170cm) <p>15 steps to this room from the road.</p>



ROOMS AND SUITE DESCRIPTIONS

<p>No photos for this room as yet, it will be available from Easter 2023</p>	<p>Room 4: Small Room (16sq m) CLUB</p> <p>This is a non-sea view room in Little Tresanton, perfect for a single traveller or combined with Rooms 2 & 3 a great option for growing families. The ensuite bathroom has a bath tub and overhead shower.</p> <p>✓ Bed size is a King (160cm)</p> <p>18 steps to this room from the road.</p>
--	--



ROOMS AND SUITE DESCRIPTIONS

MAIN TRESANTON (Location 1)

Our main building comprising of three floors. The ground floor is the public area level with the reception, sitting room for relaxing by the fire or for pre-dinner drinks, cinema/function room and the restaurant with large terrace for those lazy summer days.

There are 29 steps from the road to reception and the first (18 steps from reception) and second floor (35 steps from reception) are the accommodation levels.



Room 5: Spacious Room (22sq m)

HEART

This room in Main Tresanton has a sea view and a 3.6sq m terrace with seating and loungers. The ensuite bathroom has a bathtub with separate shower.

- ✓ Bed size is Super King (180cm)
- ✓ 37 steps from the roadside



Room 6: Favourite Room (26sq m)

SPADE

This room in Main Tresanton has a sea view and a 3.6sq m terrace with seating and loungers. The ensuite bathroom has a bath tub and a separate shower.

- ✓ Bed size is Emperor (200cm)
- ✓ Can be made as a Twin.
- ✓ Can take a Cot.
- ✓ Tea & coffee making facilities in room
- ✓ 37 steps from the roadside



Room 7: Favourite Room (25sq m)





SPADE

This room in Main Tresanton has a sea view. The room is spacious and has the largest window aperture giving you great light/views over the bay. The ensuite bathroom has a bath tub and a separate shower.

- ✓ Bed size is Emperor (200cm)
- ✓ Can be made as a Twin.
- ✓ Can take a Cot.
- ✓ 37 steps from the roadside



ROOMS AND SUITE DESCRIPTIONS

	<p>Room 8: Spacious Room (20sq m) HEART</p> <p>This room in Main Tresanton has a sea view and seating area. The ensuite bathroom has a bathtub with separate shower.</p> <ul style="list-style-type: none"> ✓ Bed size is Emperor (200cm) ✓ Can be made as a Twin. ✓ Interleading with Room 9 ✓ 37 steps from the roadside
	<p>Room 9: Spacious Room (23sq m) HEART</p> <p>This room has a sea view and seating area. The ensuite bathroom has a bathtub with separate shower.</p> <ul style="list-style-type: none"> ✓ Bed size is Emperor (200cm) ✓ Can be made as a Twin. ✓ Can take an Extra Bed or a Cot. ✓ Interleading with Room 8 ✓ 37 steps from the roadside
	<p>Room 10: Spacious Room (20sq m) HEART</p> <p>This room has a sea view and seating area. The ensuite bathroom has a bath tub and a separate shower.</p> <ul style="list-style-type: none"> ✓ Bed size is Emperor (200cm) ✓ Can be made as a Twin. ✓ Interleading with Room 11 ✓ 37 steps from the roadside
	<p>Room 11: Medium Room (16sq m) DIAMOND</p> <p>This room has a sea view and seating area. The ensuite bathroom although this room has no bath it boasts a luxurious double headed rain shower.</p> <ul style="list-style-type: none"> ✓ Bed size is Emperor (200cm) ✓ Can be made as a Twin. ✓ Interleading with Room 10 ✓ 37 steps from the roadside







ROOMS AND SUITE DESCRIPTIONS

	<p>Room 12: Medium Room (16sq m) DIAMOND</p> <p>This room has a sea view and boasts a large outside terrace with seating and loungers. The ensuite bathroom has a bath tub with overhead shower.</p> <ul style="list-style-type: none"> ✓ Bed size is European King (160cm) ✓ 37 steps from roadside
	<p>Room 14: Medium Room (17.5sq m) DIAMOND</p> <p>This room has a sea view. The ensuite bathroom has a bath tub with overhead shower.</p> <ul style="list-style-type: none"> ✓ Bed size is European King (170cm) ✓ 54 steps from roadside
	<p>Room 15: Medium Room (17sq m) DIAMOND</p> <p>This room has a sea view and a large double bed (zip/link). The ensuite bathroom has a bath tub with overhead shower.</p> <ul style="list-style-type: none"> ✓ Bed size is Super King (180cm) ✓ Can be made as a Twin. ✓ 54 steps from roadside
	<p>Room 16: Spacious Room (20sq m) HEART</p> <p>This room in Main Tresanton has a sea view and a king size bed. The ensuite bathroom has a bath tub and a separate shower.</p> <ul style="list-style-type: none"> ✓ Bed size is Emperor King (200cm) ✓ Can be made as a Twin. ✓ Can take an Extra Bed or a Cot. ✓ 54 steps from roadside
	<p>Room 17: Small Room (14.5sq m) CLUB</p> <p>This small but perfectly formed room has a sea view. The ensuite bathroom has a bathtub with separate shower.</p> <ul style="list-style-type: none"> ✓ Bed size is European King (170cm) ✓ Interleading with Room 18. ✓ 54 steps from roadside ✓



ROOMS AND SUITE DESCRIPTIONS

	<p>Room 18: Medium Room (16sq m) DIAMOND</p> <p>This room has a sea view. The ensuite bathroom has a bathtub with separate shower.</p> <ul style="list-style-type: none"> ✓ Bed size is Super King (180cm) ✓ Can be made as a Twin ✓ Interleading with Room 18 ✓ 54 steps from the roadside
	<p>Room 19: Medium Room (16sq m) DIAMOND</p> <p>This room has a sea view and a king size bed. The ensuite bathroom has a bath tub with separate shower.</p> <ul style="list-style-type: none"> ✓ Bed size is Super King (180cm) ✓ Interconnecting with Room 20 ✓ 54 steps from the roadside
	<p>Room 20: Small Room (14sq m) CLUB</p> <p>This room has a sea view and a king size bed. The ensuite bathroom has a bath tub with separate shower.</p> <ul style="list-style-type: none"> ✓ Bed size is Super King (180cm) ✓ Interconnecting with Room 20 ✓ 54 steps from the roadside
	<p>Room 21: Small Room (14sq m) CLUB</p> <p>This room has a sea view and a king size bed. The ensuite bathroom is equipped with a luxurious shower, no bath.</p> <ul style="list-style-type: none"> ✓ Bed size is King (160cm) ✓ Can be made as a Twin ✓ 54 steps from the roadside



ROOMS AND SUITE DESCRIPTIONS

UPPER TRESANTON (Location 2)

Located at the back of the hotel has unrivalled views over the bay and the Carrick Roads. There are a number of steps to this building and it is accessed through Main Tresanton.

The building is two floors of accommodation, ground floor is 61 steps and the first floor is 75 steps from reception.



UNAVAILABLE

Room 22: The Lamorran Suite (50sq m)

This is Tresanton's largest suite with three bedrooms on the ground floor of the building. The room has a large sitting /dining area and a long terrace overlooking St Mawes Bay.

- ✓ **Master bedroom** – king/twin, with ensuite bathroom (bath and separate shower), bed size is Emperor (200cm)
- ✓ **Second bedroom** – king/twin, bed size is Super King (180cm)
- ✓ **Cabin bunk bed room** for children up to 16 years of age
- ✓ Guest bathroom with bath and separate shower.
- ✓ Pantry area with tea & coffee making facilities and small fridge.
- ✓ 80 steps from the roadside





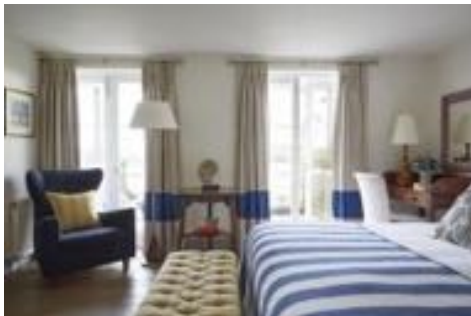
Room 24: Spacious Room (19sq m) **HEART**

This room is on the ground floor and has a sea view and balcony terrace. The ensuite bathroom has a bath tub with overhead shower.

- ✓ Bed size is Emperor King (200cm)
- ✓ Can be made as a Twin.
- ✓ Can take an Extra Bed or Cot
- ✓ 80 steps from the roadside



ROOMS AND SUITE DESCRIPTIONS

	<p>Room 25: Family Suite (37sq m) DIAMOND</p> <p>This two-bedroom family suite boasts spectacular sea views from the balcony.</p> <ul style="list-style-type: none"> ✓ Master bedroom – king/twin, with ensuite bathroom (bath and separate shower), bed size is Super King (180cm) ✓ Second bedroom – king/twin, bed size is Super King (180cm) ✓ Guest bathroom with shower only located just off sitting room area. ✓ Both beds can be made as Twin ✓ Tea & coffee making facilities in room ✓ 94 Steps from the roadside
	<p>Room 26: Small Room (14sq m) CLUB</p> <p>This room is on the first floor of Upper Tresanton with sea view and a small balcony. The ensuite bathroom has a bath tub with overhead shower.</p> <ul style="list-style-type: none"> ✓ Bed size is a Super King (200cm) ✓ Can be made as a Twin. ✓ Interconnecting with Room 27 ✓ 94 steps from the roadside
	<p>Room 27: Spacious Room (19sq m) HEART</p> <p>This room is on the first floor with sea view and a small balcony area. The ensuite bathroom has a bath tub with overhead shower.</p> <ul style="list-style-type: none"> ✓ Bed Size is Emperor (200cm) ✓ Can be made as a Twin. ✓ Can take a Cot ✓ Interconnecting with Room 26 ✓ 94 steps from the roadside



ROOMS AND SUITE DESCRIPTIONS

THE NOOK (Location 4)

Separated from the main hotel and located on the front of the property. This sweet little coastal house has three bedrooms over two floors with ensuite bathrooms. 5 steps from the road to ground floor and 14 steps to first floor.



Room 28: Favourite Room (28sq m) **SPADE**

This sea-view room in The Nook has a large bay window seating area. The ensuite bathroom has a bath tub and a separate walk-in shower.

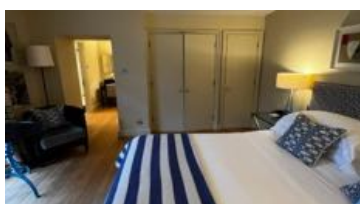
- ✓ Bed Size is Emperor (200cm)
- ✓ Can be made as a Twin.
- ✓ Dogs are welcome.
- ✓ Tea & coffee making facilities in room
- ✓ 5 steps from the roadside and sloped access to the main hotel and restaurant.



Room 29: Favourite Room (24sq m) **SPADE**

This sea-view room in The Nook has a large bay window seating area. The ensuite bathroom has a bath tub and a separate walk-in shower.

- ✓ Bed Size is Emperor (200cm)
- ✓ Can be made as a Twin.
- ✓ Can take an Extra bed or baby cot.
- ✓ Tea & coffee making facilities in room
- ✓ 19 steps from the roadside and sloped access to the main hotel and restaurant.



Room 30: Medium Room, Non Sea View (15sq m)

This room at the rear of The Nook Cottage and whilst it does not have a sea view it does have its own private terrace looking towards the main terrace of the hotel. The ensuite bathroom has a bath tub and also a separate walk-in shower.

- ✓ Bed Size is Super King (180cm)
- ✓ Can be made as a Twin.
- ✓ Dogs are welcome.
- ✓ 19 steps from the roadside and sloped access to the main hotel and restaurant.

CLUB



ROOMS AND SUITE DESCRIPTIONS

ROCK COTTAGE (Location 5)

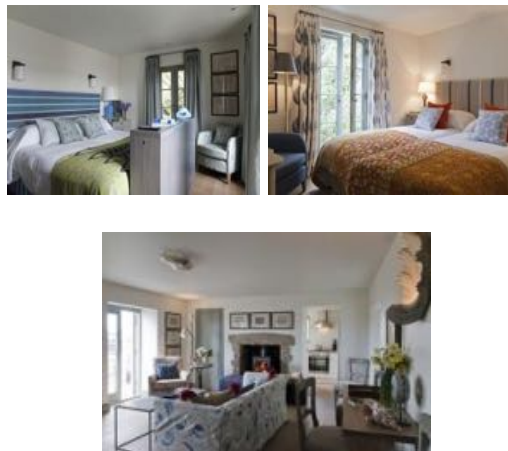
Located behind The Nook and adjacent to the main building, it is accessed by sloping paths from the main terrace and road. The house is a three storey building with ensuite rooms on each floor. Ground floor has no steps to access, first floor is 14 steps and the second floor is 28 steps from ground level.



Room 31: Garden Room, Non Sea View (21sq m) **CLUB**

This room whilst having no sea view benefits from a Private Mediterranean terrace garden with dining table and loungers. Bathroom is ensuite with a bath tub and separate walk-in shower.

- ✓ Bed size is Emperor (200cm)
- ✓ Can be made as a Twin.
- ✓ Dogs are welcome.
- ✓ Tea & coffee making facilities in room
- ✓ There are no steps to this room as it can be accessed via a slope which also leads to the main hotel, restaurant and terraces.

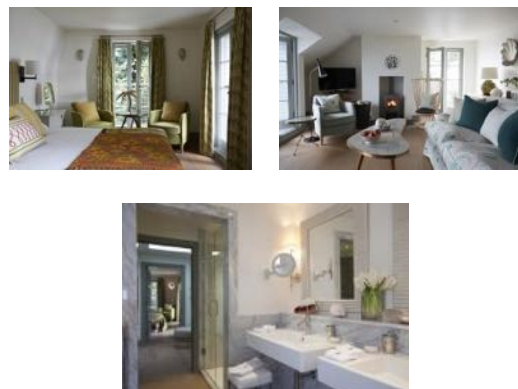


Room 32: Family Suite (41sq m)

SPADE

This two-bedroom Family suite has a large living space to enjoy with log burner stove for those chilly winter nights or a balcony terrace to enjoy the sunsets on a summer's eve.

- ✓ **Master** - Bed size is Emperor (200cm)
- ✓ **Second** - Bed size is Super King (180cm)
- ✓ Shared bathroom with separate bath and shower facilities.
- ✓ Both beds can be made as Twin
- ✓ Fully equipped galley kitchen.
- ✓ 14 steps from the roadside and sloped access to the main hotel, restaurant and terraces.



Room 33: Forte Suite (39sq m)

NO-TRUMP

The hotels Master Suite is located on the top floor of the building. The room has a large sitting room with wood burning stove as well as a private balcony terrace with wonderful sea views.

- ✓ Bed size is Emperor (200cm)
- ✓ Can be made as a Twin.
- ✓ Bathroom with bath tub, separate shower and double vanity.
- ✓ Tea & coffee making facilities
- ✓ 28 steps from the roadside and sloped access to the main hotel, restaurant and terraces.