

STOCKENBRIDGE

BREAKS



The Woburn Hotel, Woburn, Bedfordshire

Friday 8th February - Sunday 10th February 2019

A Duplicate Bridge weekend with the Stockens in a lovely country house hotel with a two-rosette restaurant, near Woburn Abbey

from £378pp* including:

2 nights' stay in this luxury 4-star country house hotel

Half board at the hotel's acclaimed restaurant including:

- breakfast with hot and cold options including full English
- refreshments available during bridge play
- delicious three-course dinner with 1/2 bottle per person of selected wines

Reception with aperitif and canapés on the first evening

All bridge tuition and course notes and prizes

* with 10% Loyalty Discount

Very special bridge holidays

Duplicate Bridge with the Stockens

Zeb Stocken has many years experience of teaching and hosting bridge events, and whether you come as a group, in a pair or on your own, you can be certain of an instructive and enjoyable game.

Claudia – Zeb’s sister – will be on hand to ensure the smooth running of your holiday and, as an experienced bridge player herself, she will also be supervising bridge sessions and partnering players where needed.

Peter - their father - will be doing the hand analysis.

Dinah - their mother - will also make up the team.



The bridge programme will focus on duplicate play and tactics, and the weekend is aimed at confident intermediate-plus and advanced players. Our ethos is that bridge (*competitive or not*) should be a friendly and social game and we insist that all players must show courtesy and good manners to their partner and to other players at the bridge table. No partner is needed to come on this holiday, but please be aware that, while we will always do our best to find you a suitable partner, we may be very limited in choice. The Stockens will always be available to partner up guests where needed. All bridge sessions are optional.

Bridge Schedule (*timings are approximate*)

Friday

Introduction (teams of 4)

3.30pm - 5.30pm

Championship Pairs 1

8.30pm - 11pm

Saturday

Run through of Friday night’s hands

9.45am - 10.30am

Seminar 1 + supervised duplicate

10.30am - 12.30pm

Seminar 2 + supervised duplicate

4.30pm - 6.30pm

Championship Pairs 2

8.30pm - 11pm

Sunday

Run through of Saturday night’s hands

9.45am - 10.30am

Championship Pairs 3

10.30am - 12.30pm



The Woburn Hotel

The Woburn Hotel is situated at the heart of the pretty Georgian village of Woburn, at the gateway to the historic Woburn Abbey Estate, home to the 15th Duke of Bedford and his family, set in a 3,000 acres of deer park and Humphry Repton inspired landscape. This charming and characterful 18th century hotel with four AA stars is one of Bedfordshire's finest country hotels and blends English tradition with contemporary creature comforts.

This hotel exudes warmth from the moment you step inside, with plush carpets and luxurious décor in rich autumnal tones. The Tavistock Bar, with blackened wooden beams and open fireplace, is a cosy place for a drink, while the Drawing Room is the perfect place to relax with comfortable sofas and chairs. Exceptional service, friendly staff and a warm welcome are guaranteed at The Woburn Hotel. We will be playing bridge in the bright and elegant Canaletto Suite and dining in an adjacent private dining room.

Delicious food at Olivier's

Under executive chef, Olivier Bertho, the hotel's restaurant holds two AA rosettes and has won many local awards for its excellent cuisine. Expect a modern British and European menu with fresh, locally-sourced ingredients.



MENU at THE WOBURN HOTEL

Sweet potato soup with Cajun spices and coriander
Coarse pork terrine with piccalilli and toasted onion loaf
Salmon and spring onion rilette with tartar sauce and crostinis

Stuffed chicken with basil and tomato coulis, gratin Dauphinois, carrot and broccoli
Steamed hake fillet with chive beurre blanc, crushed new potatoes, spinach and peas
*Grilled sirloin steak with brandy and pepper sauce, roasted beef tomatoes,
mushrooms and parmentier potatoes*

Strawberry and mint Eton mess with strawberry ice cream
Warm sticky toffee pudding, butterscotch sauce and clotted cream
Selection of cheeses with savoury biscuits, grapes and celery



Please Note

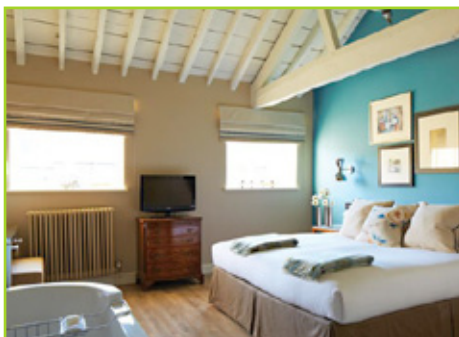
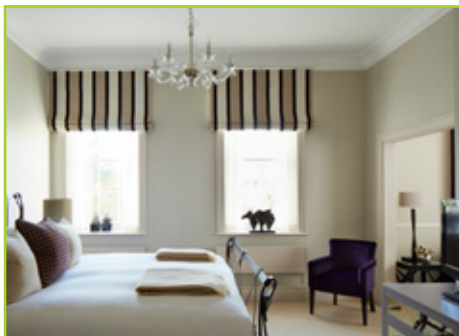
Dinner (*at 7pm*) will be accompanied by half a bottle of house wine per person. This is a sample menu and will vary according to the season and availability of produce. There will be a choice of 3 dishes for each course, ordered in advance. Included in the price is breakfast with hot and cold choices including a full English breakfast.

Lunch is not included in the price of your holiday, giving you the flexibility to eat at the hotel or eat elsewhere. The hotel serves a varied lunch menu from light snacks to main courses at its main restaurant, Olivier's or the Tavistock Bar. Any special diets can be catered for.





Accommodation

Bedrooms are divided between the original 18th century house and a modern extension. There are also a number of nearby cottage suites.

All bedrooms have tea and coffee facilities, wifi, telephone, satellite television and radio, bathrobes, hairdryer and safe. They all have en-suite bathrooms; most with a shower over the bath, though some have a walk-in shower and two have wet room style open showers, the rooms adapted for wheelchair access. NB there is no lift. Please contact us for further bedroom details including accessibility and bathroom facilities. *Bedrooms are available from 2pm and check out is 11am.*



Standard	♣	Smallest rooms. Double (no twin). Ground or first floor. <i>See top left photo on back page of brochure.</i>
Executive	♦	Larger rooms with a seating area. Double/twin. Ground or first floor. <i>See top right photo on back page.</i>
Abbey Deluxe	♥	Individually designed rooms with a seating area. King/twin. First floor. <i>See bottom left photo on back page.</i>
Cottage Executive	♥	Located in the adjacent cottages, individually designed rooms with a seating area. King/twin. Ground floor.
Main House Suite	♠	Individually designed rooms with a sitting room. King/twin. First floor. <i>See top photo above: 'The Racing Room'</i>
Cottage Suite	NT	Located in the 18th century cottages next to the hotel, individually designed with original features and a sitting room. King/twin. Split level. <i>See second photo above.</i>

Prices Per Person					NT
Full Price - twin occupancy	£420	£450	£480	£510	£540
With 10% loyalty discount (2 sharing)	£378	£405	£432	£459	£486
Full Price - single occupancy	£500	£560	£620	£650	£710
Single occupancy with discount	£450	£504	£558	£585	£639

Loyalty Discount

We are offering a 10% 'loyalty' discount on the holiday price for all previous StockenBridge Breaks guests, provided that the holiday is booked before the 30th September 2018.

If you would like to share a room with a friend, even if they are new to StockenBridge Breaks, the discount will apply to them too.

How to Book...

To book your holiday, please fill out and submit the on-line booking form (contact us for the link or see the Woburn holiday page of our website) together with the deposit of £120 per person by bank transfer or cheque - see below or the booking form for payment details. Alternatively we can email/send a booking form to you to print out and fill in. The full payment will be due by November 30th 2018. Please see website for Terms and Conditions.

Payment

- where possible an on-line transfer is preferable for a speedy transaction that is easy to track.

On-line Transfer:

Account name: 'Stockens Ltd' Account Number: 27452468 Sort Code: 30-11-75

Please quote 'Woburn 19' or your invoice number if you have one

Cheque:

Please make cheques payable to 'Stockens Ltd'

Financial Protection

Your money paid to us is fully protected against the insolvency of StockenBridge Breaks, in compliance with the Package Travel Regulations 1992. In this unlikely event, you will receive a full refund of your money.



Other things to do around and about

There are no bridge sessions scheduled for Saturday afternoon, so this would be the perfect time to get some fresh air and explore the local surroundings.



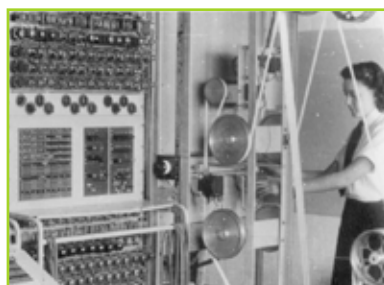
Woburn village and the Woburn Estate

The pretty village of Woburn has plenty of independent shops including an antiques centre and art gallery. There are also lots of lovely walks in Woburn Estate Deer Park with views of the magnificent Woburn Abbey (see photo above). NB Woburn Abbey and Gardens will be closed at this time of year.



Bletchley Park (6 miles away)

Home to the Enigma code breaking machine, visit one of the most important historical locations of the second World War. Once Britain's best kept secret, explore the code breaking huts within the Victorian estate.



Woburn Golf Club (2.5 miles away)

Three perfect parkland courses in the rolling Woburn Estate make the Woburn Golf Club a prized golf destination. Reduced green fees for hotel guests. Must be pre-booked with the club and handicap restrictions apply.



Woburn Safari Park (2.5 miles away)

Visit this well-known wildlife park with over 1000 animals. Discounted rates.

Travel Details

Travelling to The Woburn Hotel is very straightforward. It is situated approximately one hour's drive from London, Birmingham, Oxford and Cambridge. Alternatively, Woburn Sands and Milton Keynes train stations are three and ten miles away respectively. We can easily arrange for a taxi pick-up.



Address: The Woburn Hotel, 1, George Street, Woburn, Bedfordshire, MK17 9PX
Telephone: +44 (0)1525 290441

For more information, please visit the website: www.thewoburnhotel.co.uk

For more details:

website: www.stockenbridgebreaks.com

email: zeb@stockenbridge.co.uk or claudia@stockenbridgebreaks.com

telephone: +44 7951 060092 (Zeb -UK) or +33 663999289 (Claudia - France)

Stockens Limited - Company number 8970204. Incorporated in England & Wales
Registered Office: 20, Fernwood Avenue, London, SW16 1RD

